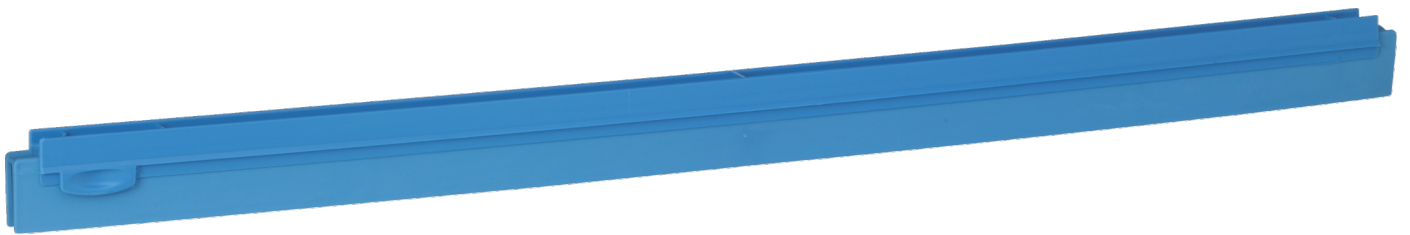


77353

# Replacement Cassette, Hygienic, 700 mm, , Blue



Replacement squeegee blade for Hygienic fixed and revolving neck squeegees (Series 7715x and 7725x).

# Technical Data

<b>Item Number</b>	77353
<b>Material</b>	Polypropylene TPE Rubber
<b>Complies with (EC) 1935/2004 on food contact materials<sup>1</sup></b>	Yes
<b>Produced according to EU Regulation 2023/2006/EC of Good Manufacturing Practice</b>	Yes
<b>FDA compliant raw material (CFR 21)</b>	Yes
<b>Complies with UK 2019 No. 704 on food contact materials</b>	Yes
<b>Meets the REACH Regulation (EC) No. 1907/2006</b>	Yes
<b>Use of phthalates and bisphenol A</b>	No
<b>Is Halal and Kosher compliant</b>	Yes
<b>Pat. Pending/Patent No.</b>	EP2227129 validated in DK, DE, FR and GB. DE 602008048400.9
<b>Box Quantity</b>	20 Pcs.
<b>Quantity per Pallet (80 x 120 x 200 cm)</b>	640 Pcs
<b>Quantity Per Layer (Pallet)</b>	80 Pcs.
<b>Length</b>	700 mm
<b>Width</b>	25 mm
<b>Height</b>	45 mm
<b>Net Weight</b>	0.2 kg
<b>Weight bag (Recycling Symbol "4" Low Density Polyethylene (LDPE))</b>	0.0103 kg
<b>Weight cardboard</b>	0.0153 kg
<b>Tare total</b>	0.0256 kg
<b>Gross Weight</b>	0.23 kg
<b>Cubik metre</b>	0.000787 M3
<b>Recommended sterilisation temperature (Autoclave)</b>	121 °C
<b>Max. cleaning temperature (Dishwasher)</b>	93 °C
<b>Max usage temperature (food contact)</b>	50 °C
<b>Max usage temperature (non food contact)</b>	100 °C
<b>Min. usage temperature<sup>3</sup></b>	-30 °C
<b>Max. drying temperature</b>	120 °C
<b>Min. pH-value in usage concentration</b>	2 pH
<b>Max. pH-value in Usage Concentration</b>	10.5 pH
<b>Gtin-13 Number</b>	5705020773532
<b>GTIN-14 Number (Box quantity)</b>	15705020773539
<b>Customs Tariff No.</b>	96039099

New equipment should be cleaned, disinfected, sterilised and any labels removed, as appropriate to its intended use, e.g. high risk vs. low risk food production areas, general hospital areas vs. intensive care units, before use.

1. See Declaration of Compliance for further details on food contact
3. Do not store the product below 0° Celsius.