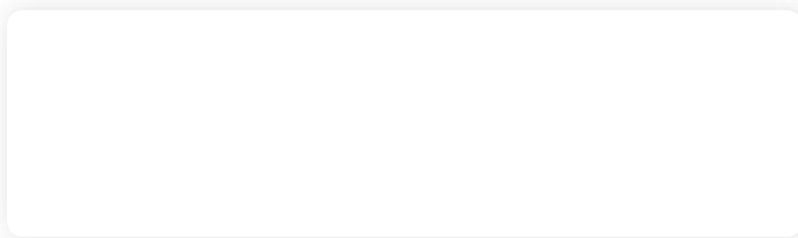


Classic Solutions

→ STANDARD MAT • INDOOR



→ WHY CHOOSE THIS MAT?

Classic Solutions mats are specially designed to pick up dirt and moisture in heavy traffic areas and buildings where a high level of cleanliness is critical.

- **ECONYL® regenerated nylon** reduces the global warming impact of nylon by up to 90% compared with the material from oil. ECONYL® is made of **100% Post-consumer recycled** content
- The rubber is **Phthalate free** and consists of **34% post-industrial recycled** content in the **rubber** to further reduce the impact on the environment
- Solution-dyed nylon fibers for **durable performance** after repeated wash cycles
- High Twist heat set nylon fibers are resistant against **crushing** and allow **dirt** to filter into the mat rather than remaining on top of the carpeted surface
- **The rubber backing** prevents curling and cracking in all types of weather
- Bleach / UV resistant

→ SPECIFICATIONS

Yarn	100% ECONYL® regenerated BCF polyamide, twisted & heat set multifilaments
	<ul style="list-style-type: none"> • Carpet weight: 722 g/m²
Backing	<ul style="list-style-type: none"> • Rubber backing: 100% nitrile rubber with 34% post-industrial recycled content in the polymer - phthalate free - For maximum oil resistance, durability, and performance. Compression-molded with reinforced borders on all four sides. • Thickness: 1.4 mm
Border	<ul style="list-style-type: none"> • Border thickness: 2.5 mm • Border width: 2 cm
Other properties	<ul style="list-style-type: none"> • Pile thickness: 10 mm • Total weight: 2.335 kg/m² • Static Control: Antistatic behaviour: Approx 10¹¹ ohms (ISO 10965) - Personal Charging: <2kV antistatic (ISO6356) • Flammability: Cfl-s1
Recommended use	Recommended for indoor commercial use at entryways, in lobbies, at front desks or anywhere additional traction or moisture control is needed.

Size Tolerance: +/- 2%

Weight Tolerance: +/- 5%



Reinforced
rubber edges



superior colour
and wash
fastness



ECONYL
Regenerated Nylon



Regenerated nylon entirely
made from waste products



100%

UV Resistant



34%

post-industrial
recycled Rubber

→ STANDARD SIZES

60x85	75x85	85x115	85x150
85x300	115x180	115x200	115x240
115x250	115x300	150x200*	150x240*
150x250*	150x300*	200x200**	200x300**

→ SPECIAL SIZES

Max. Size: 200 cm x 550 cm

* Dark Grey is the only colour available in widths wider than 150 cm.

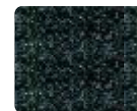
* Green Black is not available in widths wider than 115cm.

→ COLOURS

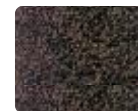
Standard Black/colour



10 Light Grey



20 Slate Grey



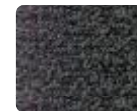
30 Dark Brown



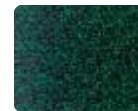
50 Dark Grey*



70 Steel Grey



90 Black Mink



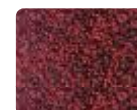
150 Green Black



160 Blue Black



180 Light Brown



190 Red Black

Clear colours



105 Clear Red



107 Clear Black



130 Clear Granite



200 Scarlet

Special patterns



114 Black Granite



104 Pebble Stone

→ **CLEANING INSTRUCTIONS**



Classic Solutions mats can be cleaned in several different ways:

1. They can be commercially laundered (see Laundering Instructions)
2. Vacuumed regularly (daily in high-traffic areas; weekly in lower-traffic applications)
3. Cleaned with an extractor and laid flat to dry

Hang to dry. Mats should always be dry before they are placed back in service and cooled before rolling.

Laundering Instructions

1. Flush, 2-3 Min. on a medium water level with a maximum temperature of 49°C
2. Flush (optional), 2-3 Min. on a medium water level with a maximum temperature of 49 °C
3. Break, 2-3 Min. on a high water level with a maximum temperature of 49 °C
4. Rinse, 2 Min. on a high water level with cold temperature
5. Rinse, 2 Min. on a high water level with cold temperature
6. Extract on low speed, 1-2 Min.
7. Shakeout with the drum turning, 1 Min.
8. Extract, on a maximum of 250G, 3-5 Min.
9. Dry (optional), 5-10 Min. with a maximum basket temperature of 82 °C
10. Cooldown, 5 Min.

Additional recommendations

- All Solution Dyed Mats can be washed together.