



## Kit Geminus window squeegee and washer support and Basic microfibre window washer sleeve



Polyamide window squeegee with interchangeable blade, locker lever, Lampo hooking system and aluminium window washer support with microfibre washer sleeve



### Technical information

code	notes	cm	pcs	kg	m <sup>3</sup>
00008330YL		↓ 25	1	0,36	0,003
00008331YL		↓ 35	1	0,43	0,003
00008332YL		↓ 45	1	0,49	0,003

### SYSTEM

Glass cleaning system with fleece and squeegee  
Ideal for washing and drying windows with just one tool

### GREEN BOX



**Eco-friendly:** stainless, robust and recyclable plastic components  
**Recycled materials:** the stainless steel used to make the components is partly recycled

### Advantages

- **One tool, two operations:** simply turn the tool to wash or dry the surface, saving time
- **Effective cleaning:** easily removes the most difficult dirt without leaving residue or streaks
- **Complete drying:** the completely smooth blade ensures maximum adherence and cleaning
- **Hygienic:** closed-cell rubber prevents dirt and bacteria from collecting
- **Efficient:** locking lever for quick blade replacement without having to release the channel
- **Handy:** 30% easier to open the blocking plate than conventional window squeegees
- **Ergonomic:** handle designed to minimise strain and prevent fatigue
- **Safe:** remains firmly attached to the pole during use, preventing accidental release



### Compatibility

Compatible with telescopic poles

### Material

Handle: polyamide, POM - Wax spreader support: aluminium - Washer sleeve: microfibre (100% polyester) - Channel: stainless steel - Blade: rubber

Packaging: [click here to see the environmental labelling of packaging](#)

### Features

Italian thread

The blade can be easily replaced when it wears out

### Washing conditions

#### Guidelines for proper fibre maintenance

Follow the washing instructions (temperatures and dosage) on the laundry detergent packaging  
Perform a pre-wash in cold water without laundry detergent to remove any residual product used during cleaning operations

Recommended use of professional textile laundry detergent

Do not use fabric softener

Do not use laundry detergents with Ph > 11

The use of laundry nets is recommended to speed up and make laundry operations more hygienic

### Specific mop instructions



Washing temperature max 60° C



Bleaching possible, do not use chlorine



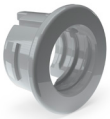
Do not tumble dry or in a dryer



### Related products



Lyra Essential pole in 3 pieces



Adapter American thread



Lyra pole in 2 pieces



Jack Angled joint